

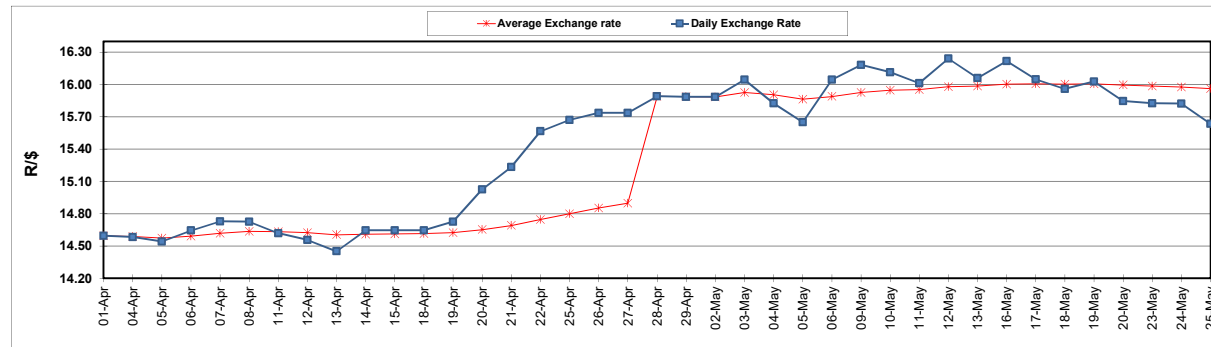
	PETROL 95 ULP	PETROL 93 ULP & LRP	DIESEL 0.05%	DIESEL 0.005%	ILL. PAR.
GAUTENG PUMP PRICE (SA c/l) AS FROM 04/05/2022	2,184.000	2,151.000	-	-	-
WHOLESALE PRICE (SA c/l) AS FROM 04/05/2022	-	-	2,199.440	2,215.840	1,664.288
SINGLE NATIONAL MAXIMUM RETAIL PRICE	-	-	-	-	2,194.000
BASIC FUEL PRICE - 25/05/2022 (SA c/l)	1,542.273	1,488.441	1,512.669	1,525.083	1,520.371
PRESS RELEASE CONTRIBUTION TO BFP 04/05/2022 - 25/05/2022 (SA c/l)	1,264.410	1,241.410	1,497.630	1,514.030	1,446.128
UNIT OVER/(UNDER) RECOVERY - 25/05/2022 (SA c/l)	(277.863)	(247.031)	(15.039)	(11.053)	(74.243)
AVERAGE BASIC FUEL PRICE 28/04/2022 - 25/05/2022	1,505.965	1,472.485	1,590.651	1,605.197	1,586.851
AVERAGE UNIT OVER/(UNDER) RECOVERY 28/04/2022 - 25/05/2022	(238.695)	(228.215)	(112.021)	(108.967)	(157.323)

ANALYSIS MOVEMENT OF AVERAGE OVER/(UNDER) RECOVERY

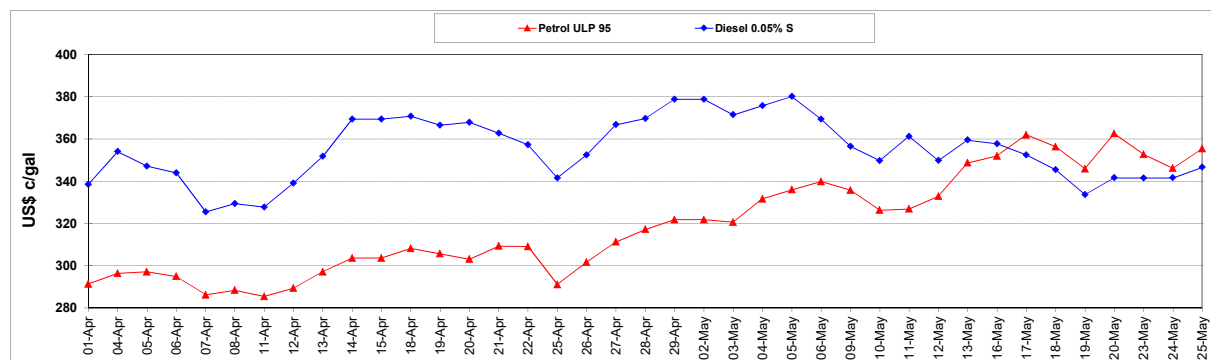
	PETROL 95	PETROL 93	DIESEL 0.05%	DIESEL 0.005%	ILL. PAR.
- MOVEMENT IN INTERNATIONAL PRODUCT PRICES	(138.550)	(130.296)	(6.244)	(2.223)	(51.799)
- MOVEMENT IN EXCHANGE RATE	(100.145)	(97.919)	(105.777)	(106.744)	(105.524)
AVERAGE UNIT OVER/(UNDER) RECOVERY 28/04/2022 - 25/05/2022	(238.695)	(228.215)	(112.021)	(108.967)	(157.323)

R/\$ EXCHANGE RATE - (R/\$15.6350 - 25/05/2022)

EXCHANGE RATE USED IN BASIC FUEL PRICE



INTERNATIONAL PRODUCT PRICES OF BASKET USED IN BASIC FUEL PRICE



BASIC FUEL PRICE IN SA CENTS PER LITRE

